

DIATOME

Swiss Diamond Knives cryo immuno

Topographic contrast of ultrathin cryo sections for correlative superresolution light and electron microscopy

Ask us for more information
Your Diatome Team



Figs.

a – g:
Correlative super-resolution
light and electron microscopy
of Tokuyasu cryo sections from
mouse kidney.

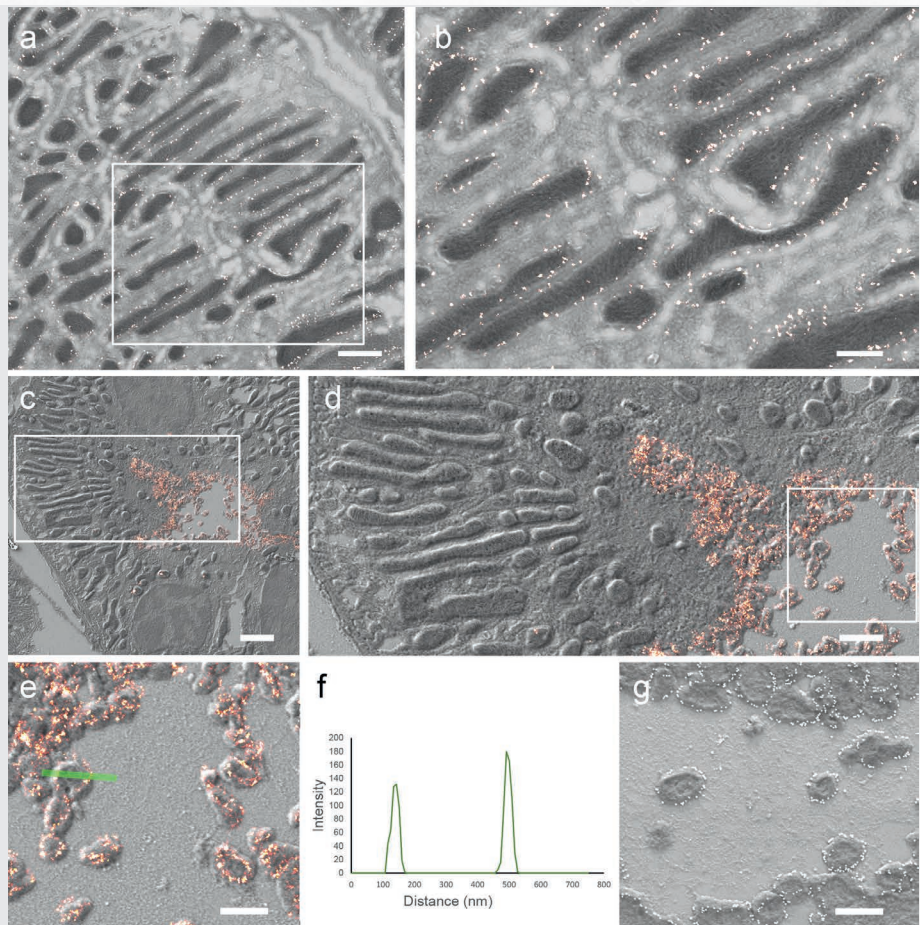
a – b:
Tom20 protein is expressed in
outer membranes of mitochon-
dria.

c – f:
pNCC is localized at plasma
membranes and in microvilli.

g:
Similar results are obtained with
immunogold on the expression
of pNCC.

Scale bars:
a: 1 μm ; c: 2 μm
d: 1 μm ; b, e, g: 0.5 μm

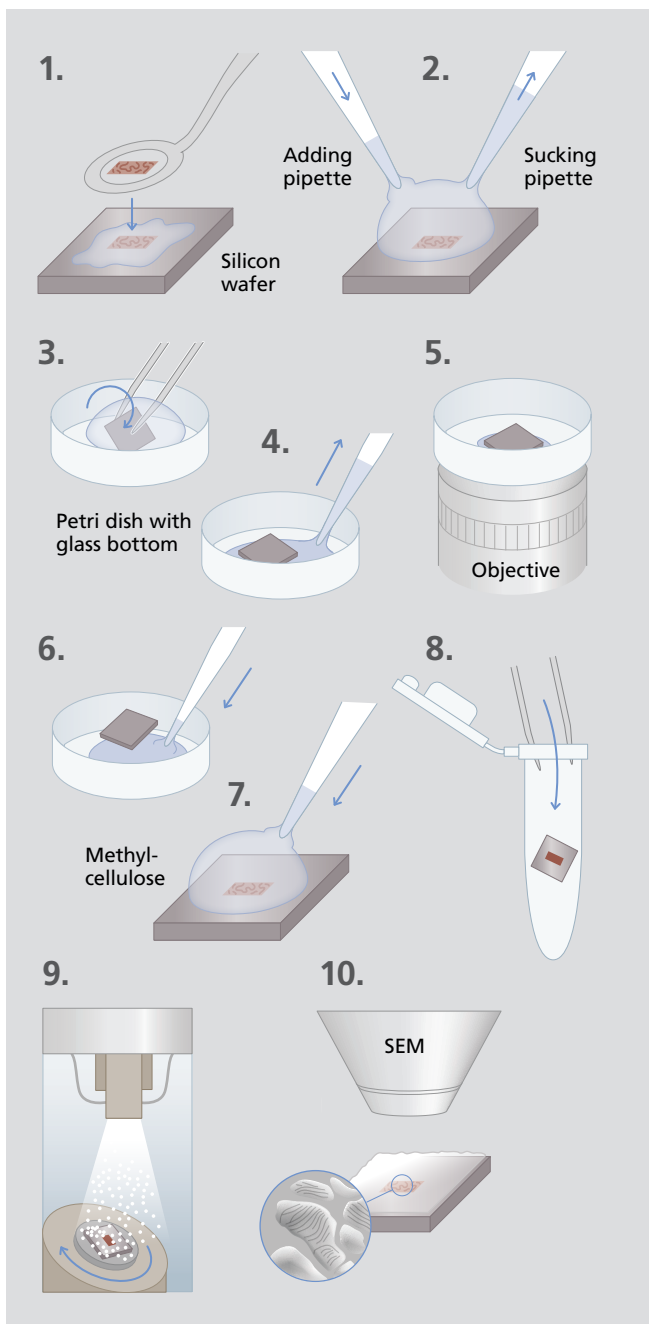
Mateos et al., Sci. Rep. 6 34062
(2016) is licensed under CC BY 4.0.



More details on the reverse side.

Swiss Diamond Knives

cryo immuno



Figs. 1 – 10:
Preparation procedure to gain topographic contrast of ultrathin cryo sections for correlative super-resolution light and electron microscopy. Design work produced by T. Gschwend, Multimedia and E-Learning Services, University of Zurich.

Knife type	Knife angle	Size [mm]	Thickness range [nm]	Boat type	Code	Application
cryo immuno	35°	2.0 3.0	30 – 300	Triangular holder	DCIMM3520 DCIMM3530	Sucrose infiltrated samples (Tokuyasu)

DiATOME U.S.
314 West Broad Street
Suite 203
Quakertown, PA 18951
Tel: 215-412-8390 or 215-646-1478
Fax: 267-730-6091
Email: info@diatomeknives.com
www.diatomeknives.com